



## FILTER TECHNOLOGY

Vacuum suction filter  
Ultra-fine filtration  
Mobile filtration system  
Compact filter  
Flat-bed filter  
Inclined bed filter  
Industrial systems  
Magnetic filter  
Endless belt filter  
Belt skimmer  
Coalescence separator

**LEHMANN**

**UMT**

## Vacuum suction filter

### USF $\mu$

Filtration without filter aids, remarkably energy-efficient and with automatic backwashing. Manageable maintenance thanks to long-living filter elements and automated mud discharge.

**Works without filter aids!**



## Ultra-fine filtration



## Filtration up to 2 µm

Innovative combination of different filtration processes leads to **minimized contamination of the filter elements** and considerably extended lifetime.



## Mobile filtration system



Can be used as full-flow  
or by-pass filtration

Flexible and space-saving solution for the filtration of oil, emulsions, water and solutions with a fineness of filtration of up to 1  $\mu\text{m}$ . Due to wheels, the mobile filtration system is easy to relocate and can be used therefore wherever it is needed.



Manageable maintenance and  
user-friendly operation



## Compact filter



For the filtration of oil, water, emulsions and solutions with a minimum requirement of space. Working on the same principle such as paper belt filters, it can filter between 30 and 1500 l/m, according to the customer-specific design. The filter is applicable for the machining of different materials like steel, aluminum, cast, gray cast as well as stainless steel. Fineness of filtration of up to 10 µm are possible.

### Can optionally be upgraded with:

- automated fleece winder
- mud box (separation of mud and fleece)



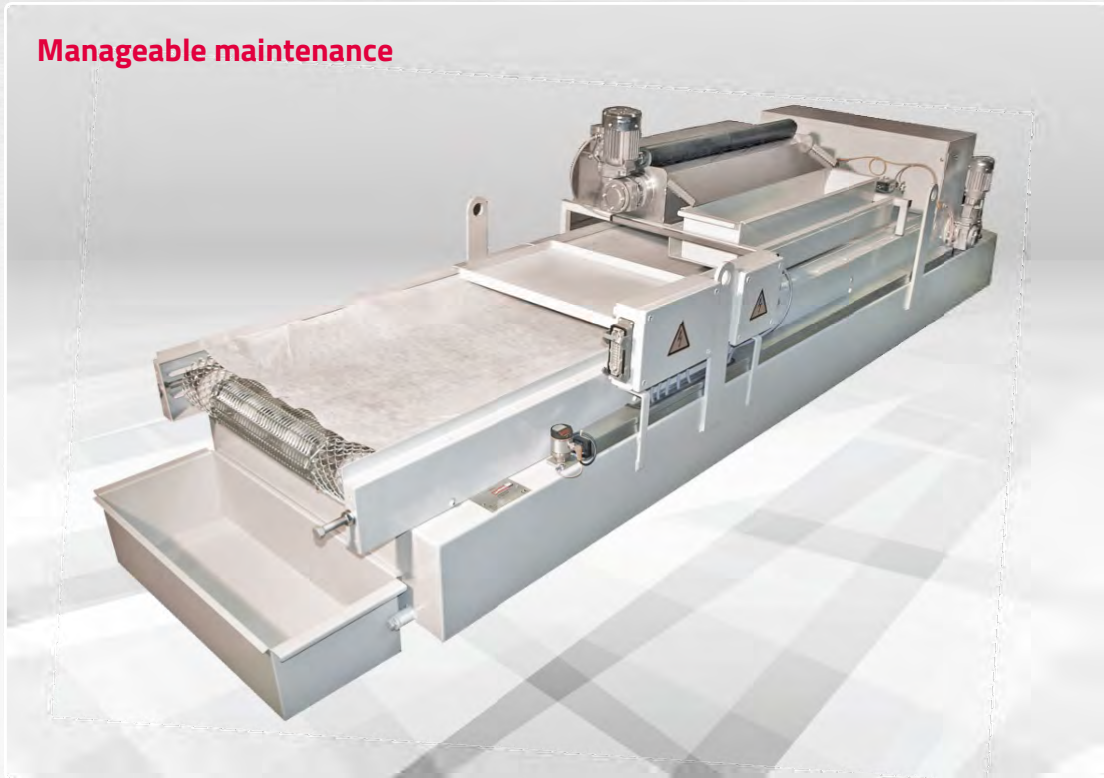
**low space requirements - high performance - high fineness of filtration**



Numerous features make the filter indispensable for metal working:

- possible two-way connection (electrics and intake)
- easy to maintain
- standardized fleece width
- low weight
- low operating costs, among others due to low power consumption and use of the complete filter fleece width
- easy and safe insertion of the filter fleece

## Flat-bed and inclined bed filter



A long lifetime, manageable maintenance, excellent price-performance ratio as well as a modular design make the flat-bed filter particularly attractive.



**Ideal for use in  
confined spaces**

A high degree of purification as well as a high exploitation of the filter material, easy service and a long lifetime do make the inclined bed filter an ideal partner for filtration, also where space is only limited available. The filter is made of stainless steel.



## Industrial systems



Customer specific industrial systems with **high throughput** for complete production lines with central fluid management for the reconditioning of cooling lubricants.



## Magnetic filter

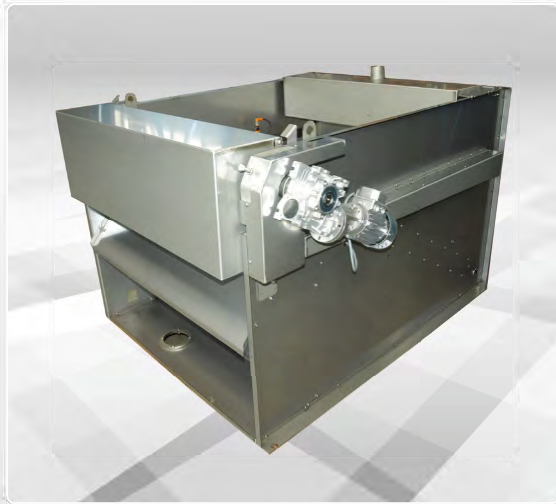


**High filtration and discharge performance** with ferromagnetic materials, modular design to upgrade existing systems.





## Endless belt filter



Filtration without  
filter aids

Fully automated operation without use of filter aids, exceptionally energy-efficient. Can be manufactured from **stainless steel V2A and V4A**.



## Belt skimmer



The belt skimmer is used wherever non-emulsified oils and contamination particles need to be separated from process fluids. Primarily, it is used for **cleaning cooling lubricants** used in metal processing machines and in alkaline degreasing baths. However, it is also suited to cleaning process fluids in which free oils are located on the surface of the fluid, e.g. washing plants.

### Advantages

- Various belt lengths from 600 – 2000 mm can be chosen
- Oil absorption capacity: up to 5 l/h
- media temperature in the skimmer up to 90°C possible

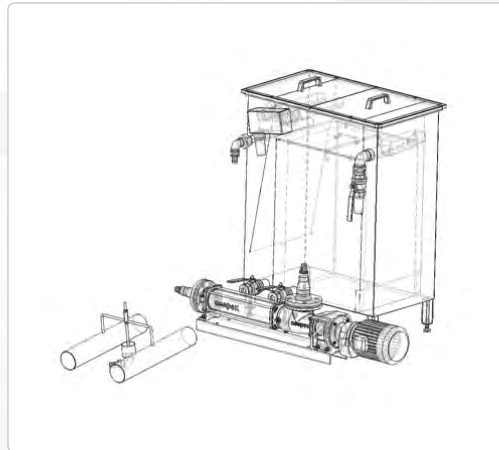


## Coalescence separator



### Advantages

- Special pump does not swirl up the liquid any further
- 99% resistance to chemicals
- Simple and trouble-free installation
- Fully automatic operation
- High flow rate
- 99% separation of surface oils possible
- Compact design



The coalescence separator is used when liquids with low levels of particulate contamination have to be separated from surface oils and emulsified oils. The coalescence principle is employed here. It is particularly suitable for **use on central liquid tanks**.



# Your partner for filter technology

Lehmann-UMT is a leading manufacturer of complete plants and components of individual conveyor and filter technology with more than 75 years of experience in machine construction.

Further parts of the portfolio are environmental technology and special machines. Rapid reactions to the market development, committed personnel and a qualified counselling of our customers are a safe base for long-lasting success.

We are manufacturing standard plants or individual complete solutions everything from one source and always according to the requirements of our customers. Challenging solutions for high performance production processes are our passion.

phone: +49 (0) 37439-744 - 0 ■ e-mail: [info@lehmann-umt.de](mailto:info@lehmann-umt.de)

NOTIZEN

Lehmann-UMT GmbH ■ Jocketa - Kurze Str. 3 ■ D-08543 Pöhl

[www.LEHMANN-umt.de](http://www.LEHMANN-umt.de)